

Floors 2,3,4

Residence Features

- + 10' ceilings
- + Full floor 2BR 2BA unit
- + Direct Otis Gen2 elevator entrance with magnetic locking system
- + Unitone 3000 state-of-the-art security/video system with audio/video to each unit on a 5" screen
- + Wide strip dark stained walnut flooring throughout residence (except bath)
- + Oversized floor to ceiling windows with sophisticated solid-state Winco frames and hardware
- + Built-in roller shade system for windows
- + Juliet balconies with integrated planter system and retractable stainless steel seats
- + Master bedroom with en-suite bath and walk-in closet with pocket doors
- + Entry foyer with closeted front loading Bosch washer/dryer
- + CAT5 wiring with wireless modems built throughout
- + Solid core wood doors throughout
- + Mitsubishi City-Multi zoned central heating and A/C system
- + 45SF private storage unit in basement
- + Valli & Valli hardware doorknobs throughout

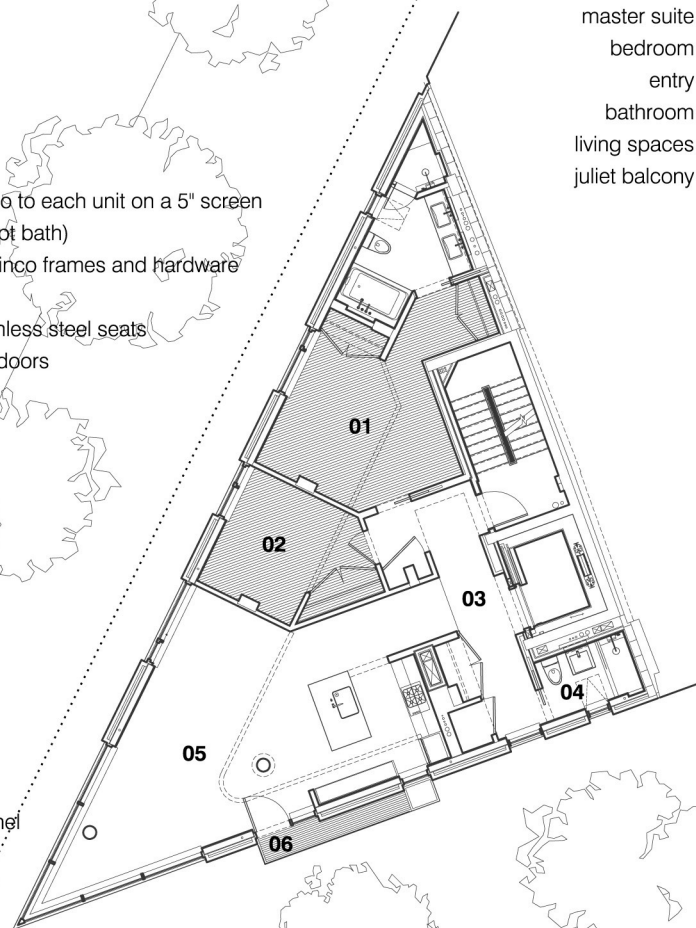
Kitchen

- + Custom Italian Poliform Varenna Asia laminate cabinets in graphite
- + Island kitchen with stool overhang
- + Custom stainless steel countertop and backsplash
- + Sub-Zero 27" 700 TCI refrigerator fully integrated with incognito panel
- + Miele 24" stainless steel gas range
- + Miele 24" externally circulating stainless steel range hood and filter
- + Miele 27" self cleaning oven
- + Miele dishwasher fully integrated with incognito panel
- + Hidden Sharp Microwave
- + Custom stainless steel sink with Dornbracht mixer w/ rinsing spray
- + Bega recessed overhead ambient lighting
- + Under cabinet recessed luminaires

Master Bath

- + Italian designed Axor Citterio fixtures for lav, shower and bath
- + Dark stained walnut custom cabinetry
- + White Thassos marble counter top and bath cover
- + Black slate and Mantra White lotus tile by Walker Zanger throughout
- + Kohler bathroom fittings in polished chrome
- + Toto Aquia dual flush toilet
- + Large scale custom mirror with medicine cabinet over lavatory
- + Dual Kohler undermount lavatories
- + Five fixture bath with Kohler 5'6" soaking tub
- + Recessed overhead ambient lighting
- + Two wall mounted "io" LED lighting strips

master suite	01	369 sf
bedroom	02	162 sf
entry	03	162 sf
bathroom	04	72 sf
living spaces	05	606 sf
juliet balcony	06	32 sf



Guest Bath

- + Italian designed Axor Citterio fixtures for lav and shower
- + Dark stained walnut custom cabinetry
- + Black slate floors with keystone blend brickwork tile by Daltile
- + Kohler bathroom fittings in polished chrome
- + Toto Aquia dual flush toilet
- + Custom mirror and medicine cabinet
- + Kohler undermount lavatory
- + Custom oversized shower stall and glass enclosure
- + Recessed overhead ambient lighting
- + Wall mounted LED "io" lighting strip