

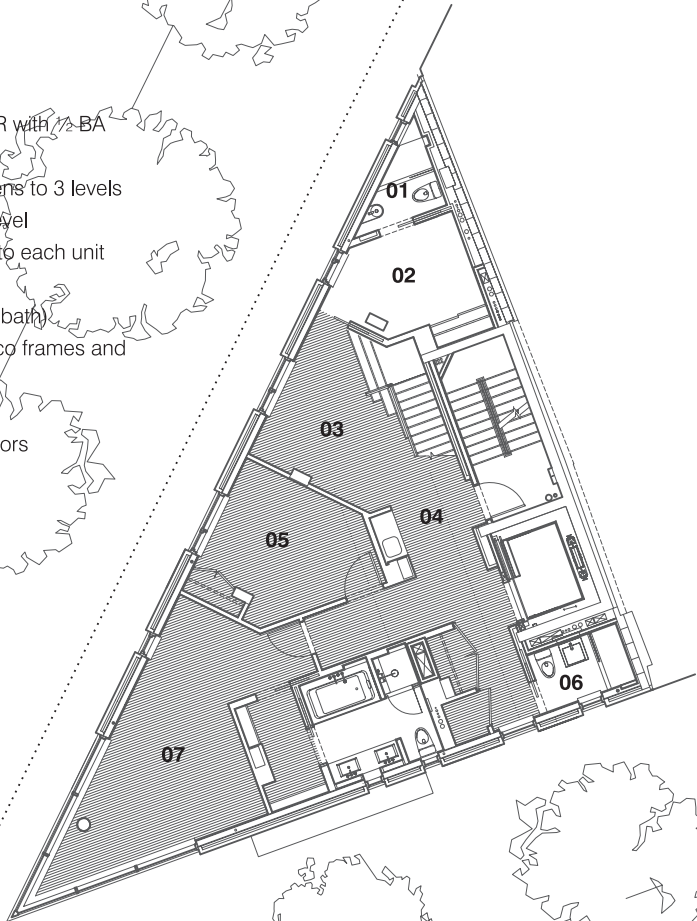
# Penthouse level 1

## Residence Features

- + 10' ceilings
- + Duplex unit with 3BR and 3BA downstairs and open kitchen/dining/LR with 1/2 BA entertainment space upstairs
- + Direct Otis Gen2 elevator entrance with magnetic locking system opens to 3 levels
- + Wrap around 617SF terrace on 2nd level with 344SF terrace on 3rd level
- + Unitone 3000 state-of-the-art security/video system with audio/video to each unit on a 5" screen
- + Wide strip dark stained walnut flooring throughout residence (except bath)
- + Oversized floor to ceiling windows with sophisticated solid-state Winco frames and hardware
- + Built-in roller shade system for windows
- + Master bedroom with en-suite bath and walk-in closet with pocket doors
- + Entry foyer with closeted front loading Bosch washer/dryer
- + CAT5 wiring with wireless modems built throughout
- + Solid core wood doors throughout
- + Mitsubishi City-Multi zoned central heating and A/C system
- + 70SF private storage unit in basement
- + Downstairs lounge with minibar sink and Sub-Zero refrigerator
- + Valli & Valli hardware doorknobs throughout

## Master Bath

- + Italian design Axor Citterio fixtures for lav, shower and bath
- + Dark stained walnut custom cabinetry
- + White Thassos marble counter top and bath cover
- + Black slate and Mantra White lotus tile by Walker Zanger throughout
- + Kohler bathroom fittings in polished chrome
- + Toto Aquia dual flush toilet
- + Large scale custom mirror with medicine cabinet over lavatory
- + Dual Kohler undermount lavatories
- + Five fixture bath with Kohler 5'6" soaking tub
- + Recessed overhead ambient lighting
- + Two wall mounted "io" LED lighting strips



bathroom 2	01	57 sf
bedroom 2	02	174 sf
library / TV room	03	144 sf
entry / pantry / stair	04	253 sf
bedroom 1	05	223 sf
bathroom 1	06	72 sf
master suite	07	512 sf